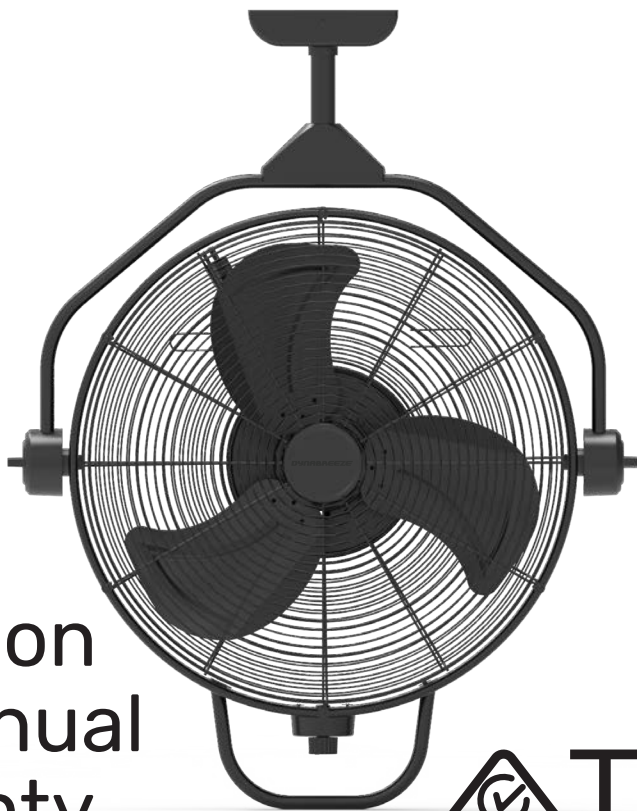


DYNABREEZE

INDUSTRIAL QUALITY SINCE 1995

500MM HEAVY DUTY
CEILING FAN



MODEL FA-23358

Instruction User Manual & Warranty



CAUTION: Read the Assembly & Safety Instructions before operating and retain for future reference.

Thank you & congratulations on the purchase of your Dynabreeze 500mm Heavy Duty Ceiling Fan

To find out more information on this product, please visit www.dynabreeze.com.au or contact:

Tradeware

Address 46 Birralee Rd, Regency Park SA 5010
Phone AU 1300 658 494 NZ 0800 689 960
Email info@tradeware.com.au
Website www.tradeware.com.au

CAUTION: Please read through the instructions carefully before using the product and ensure that the manual is kept in a safe place for future reference. Before this product is used, it must be properly located and operated in accordance with the product use and safety instructions.

WARNING: As with all machinery, there are certain hazards involved with operation and use of this appliance. Following the safety precautions in this User Manual and exercising respect and caution when using this appliance will considerably lessen the risk of personal injury. However if these safety precautions are overlooked or ignored, personal injury or damage to property may result.

SPECIFICATIONS



| | |
|----------------------|----------------------------|
| Model | FA-23358 |
| Voltage | 220-240V~ |
| Frequency | 50Hz |
| Motor Power | 155W |
| Fan Speed | 3 |
| Max Speed | 1250rpm |
| Airflow Delivery | 160m³/min |
| Installed Dimensions | W: 680mm H: 860mm / 1010mm |
| Product Weight | 7.5kg |

TABLE OF CONTENTS

Tools Required 4

Preparation 4

Safety Information 5

Package Contents 6

Assembly Instructions 8

Operating Instructions 13

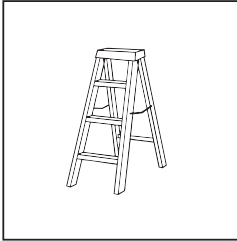
Replace Downrod 14

Care and Maintenance 15

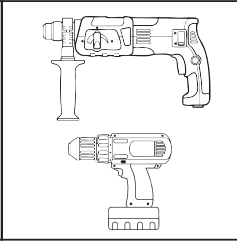
Warranty 15

TOOLS REQUIRED

You will need:



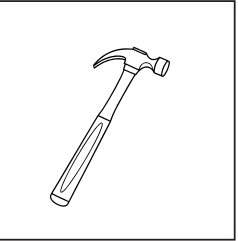
A Step Ladder



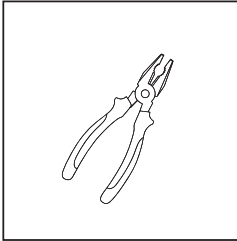
A hammer drill for masonry installation or standard drill for timber installation



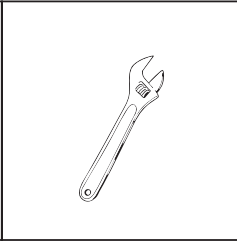
A 10mm masonry drill bit or a 5mm timber drill bit



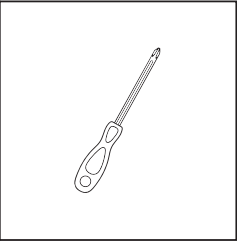
A hammer



Pliers



A shifter



A Phillips head screwdriver

These tools are not included.

PREPARATION

Before beginning the assembly of this product, ensure that all parts are present. Compare all parts with the package contents list and hardware contents list. If any part is missing or damaged, do not attempt to assemble the product.

Estimated Assembly Time: 30 minutes

Requires two people to install.

SAFETY INFORMATION

WARNING: When using electrical appliances, basic safety precautions should be followed to reduce the risk of fire, electric shock and injury to persons or property.

- To avoid a hazard due to instability of the appliance, it must be placed on an even, flat surface.
- Do not operate this appliance with a damaged cord or plug after the appliance has been damaged in any manner.
- Before each use, check for any damaged parts, and have it replaced or repaired by the manufacturer or a qualified electrician.
- Connect to properly grounded power outlet only. No other appliance should be plugged into the same outlet.
- Do not run the power cord over carpeting or other heat insulators. Do not cover the cord. Keep cord away from traffic areas.
- Switch off and unplug the appliance before moving, cleaning or making any repairs or servicing.
- Keep safety guards/grilles in place and do not operate the machine with them removed.

WARNING: Touching of moving blades can cause serious injury.

- Do not insert fingers or anything through the grille.
- Do not wear jewellery or loose clothing that could be caught by the rotating blades.
- Never leave the appliance running unattended, turn the power off.

WARNING: Exercise caution and use reasonable supervision when appliance is used near children to ensure that they do not play with the appliance.

- This appliance is not intended for use by persons (including children) with reduced physical, sensory or mental capabilities, or lack of experience and knowledge.
- Keep the area around the fan clear and suitable distance from objects that may be suctioned into the fan.
- Pack away in a dry place in the original carton when not in use.

WARNING: Do not use the appliance in a bathroom or in the immediate surroundings of a bath, a shower or a swimming pool. Keep all parts away from water or any other liquids.

WARNING: Do not hang from the adjustment handle under any circumstances.

WARNING: Ensure there is adequate space for movement when installing the fan.

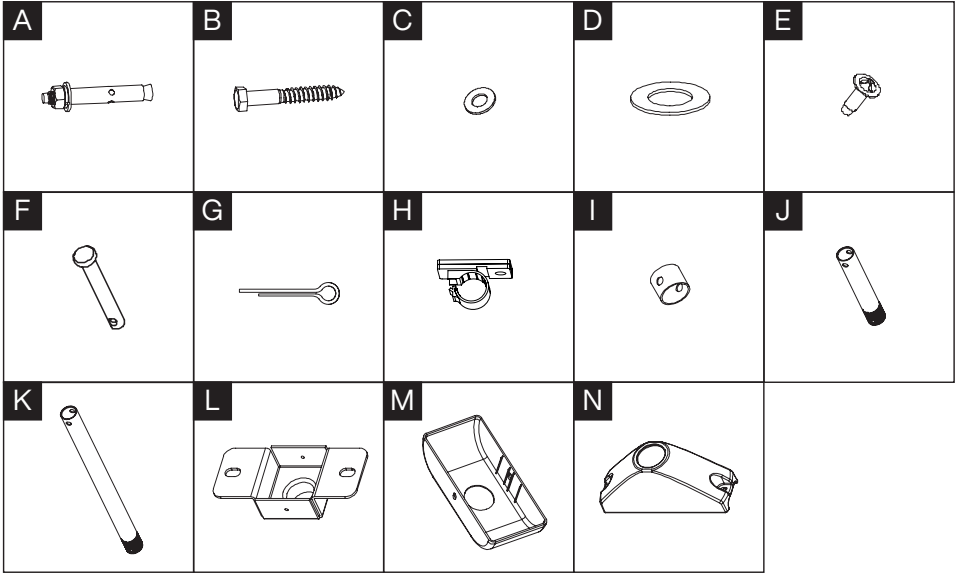
WARNING: Avoid installing the fan in high-traffic areas, hallways, or thoroughfares.

WARNING: If the supply cord is damaged, it must be replaced by the manufacturer or its service agent or similar qualified person in order to avoid a hazard.

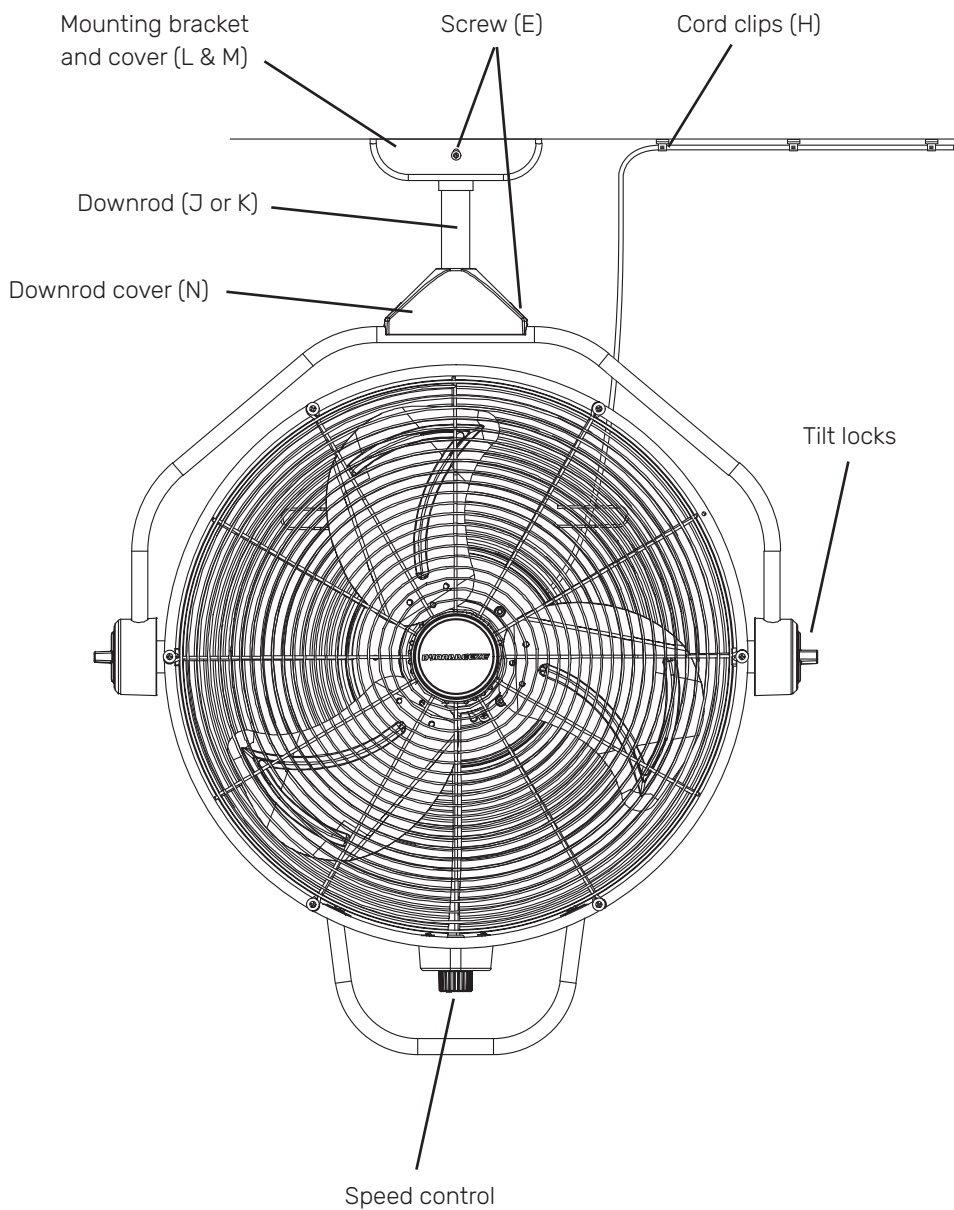
WARNING: Do not use fan near windows. Rain and water may create an electrical hazard.

WARNING: This fan is rated for indoor use only.

PACKAGE CONTENTS



| PART | DESCRIPTION | QUANTITY |
|------|---------------------------------|----------|
| A | Dyna bolt (for masonry mount) | 2 |
| B | Timber screw (for timber mount) | 2 |
| C | Metal washer (for timber screw) | 2 |
| D | Rubber washer | 1 |
| E | Screw | 4 |
| F | Pin | 2 |
| G | Split pin | 2 |
| H | Cord clip | 4 |
| I | Downrod sleeve | 1 |
| J | Downrod 150mm | 1 |
| K | Downrod 300mm | 1 |
| L | Mounting bracket | 1 |
| M | Mounting bracket cover | 1 |
| N | Downrod cover | 1 |

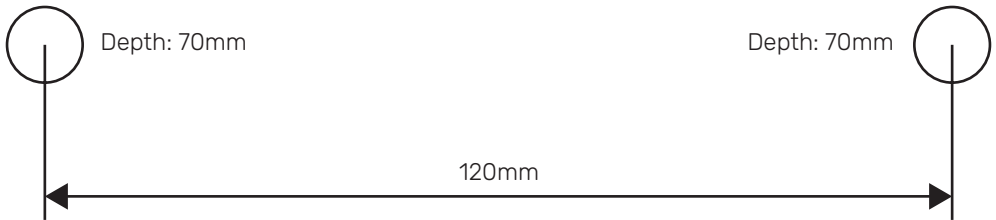


ASSEMBLY INSTRUCTIONS

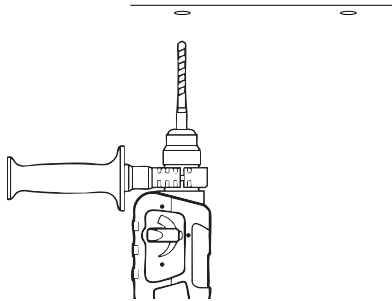
1. Mark drill holes in desired location, 120mm apart.

For masonry ceilings: Mark the desired locations and drill $\varnothing 10\text{mm}$ installation holes.

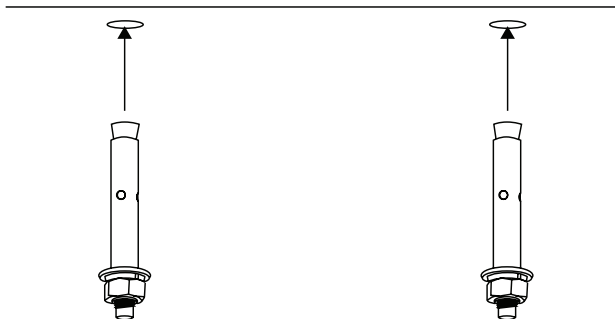
For timber ceilings: Mark the desired locations and drill pilot holes up to $\varnothing 5\text{mm}$. Then skip to step 5.



2. Using a hammer drill with a $\varnothing 10\text{mm}$ masonry drill bit, make the installation holes 70mm deep into the ceiling.



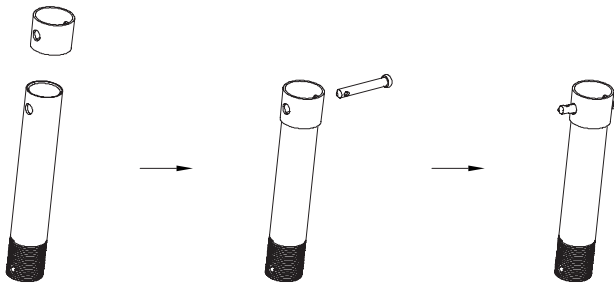
3. Hammer the dyna bolts (A) into the installation holes.



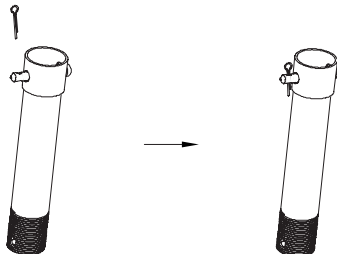
- 4.** Remove nut and washers from the installed dyna bolts and set aside.



- 5.** Slide the downrod sleeve (I) over the downrod (J or K) and insert the pin (F).
(Use either short or long downrod depending on your required length)

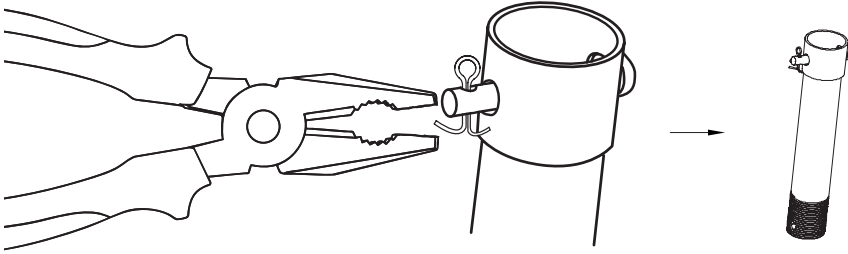


- 6.** Insert the split pin (G) through the opening on the pin.

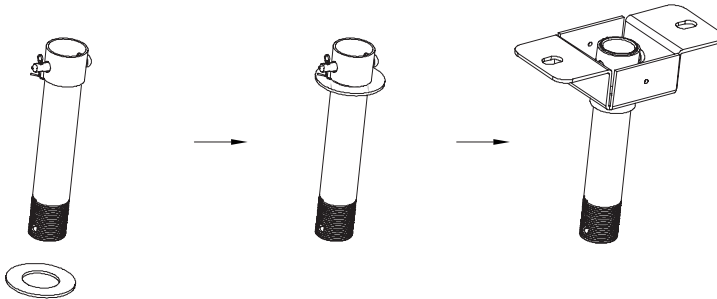


ASSEMBLY INSTRUCTIONS

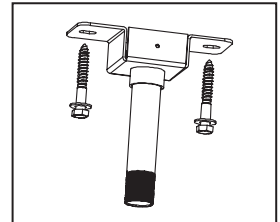
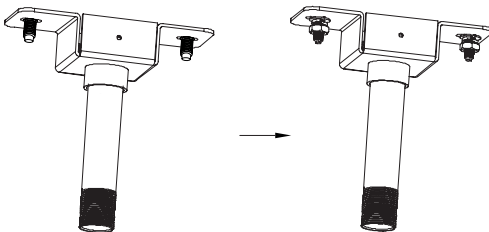
7. Using pliers, pry apart the prongs on the split pin to lock it all in place.



8. Slide the rubber washer (D) onto the assembled downrod and insert it into the mounting bracket (L).

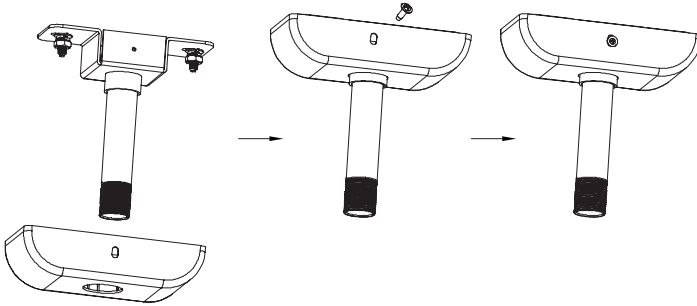


9. Slide the assembled mounting bracket onto the installed dyna bolts on the ceiling. Using a shifter, fix it in place with the washers and nuts from step 4.

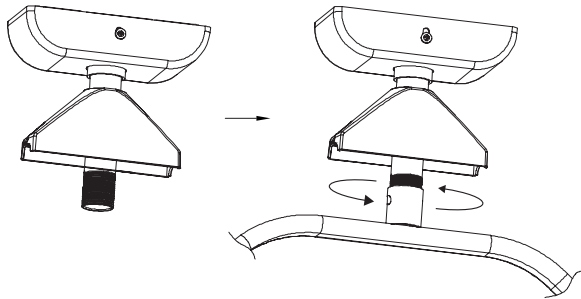


Timber screws for timber mount

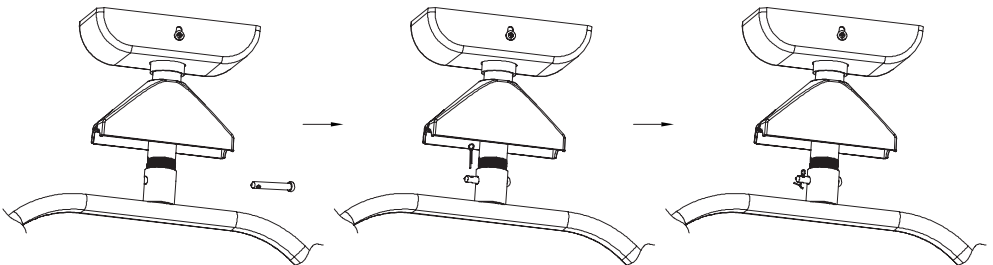
- 10.** Slide the mounting bracket cover (M) over the downrod to cover the mounting bracket. Fix it in place using screws (E) on both sides with a Phillips head screwdriver.



- 11.** Slide the downrod cover (N) onto the downrod and screw on the fan, ensuring the openings are lined up for the pin.

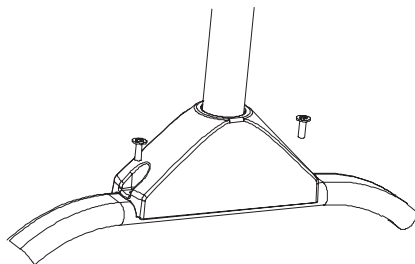


- 12.** Insert the pin (F) and then the split pin (G). Lock it in place by prying apart the prongs using pliers.

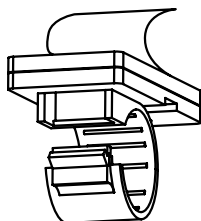


ASSEMBLY INSTRUCTIONS

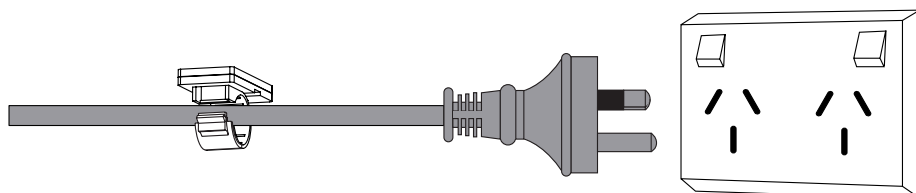
- 13.** Insert the screws (E) with a Phillips head screwdriver and lock in the downrod cover.



- 14.** To secure the fan's power cord, peel off the double-sided tape backing from the cord clips (H).



- 15.** Secure the cord clips to the ceiling on a path away from the fan and towards the power outlet. Insert the cord into each clip and press the clip closed to secure the cord. The installation is now complete and the fan is ready to plug in.



OPERATING INSTRUCTIONS

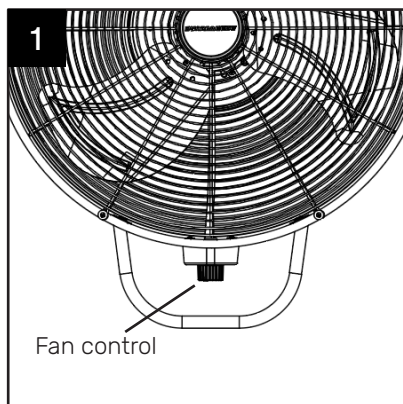
1. The fan control is located on the bottom side of the fan. The fan has four settings:

0 - Off

1 - Low Speed

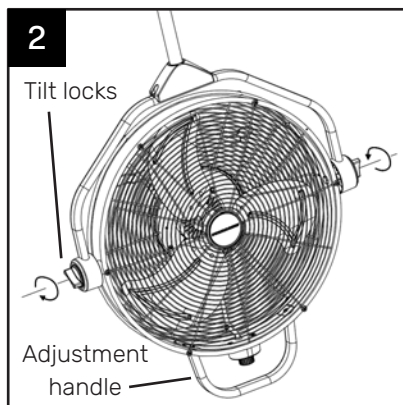
2 - Medium Speed

3 - High Speed

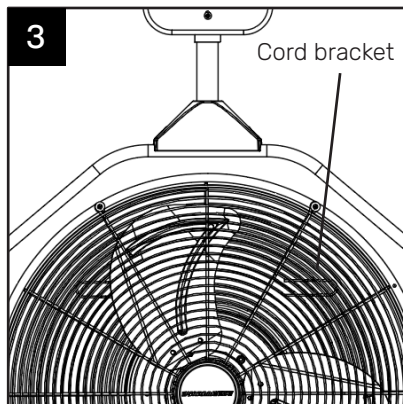


2. Use the tilt locks on the sides of the fan to adjust airflow up or down. Loosen tilt locks by turning counterclockwise, adjust the fan, and retighten tilt locks.

Rotate the fan using the adjustment handle located on the bottom of the fan to change the direction of airflow from left to right.

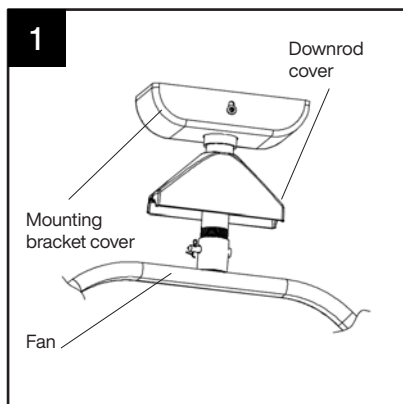


3. Cord brackets are located on the back of the fan assembly. When not in use, wrap the power cord around the two cord brackets.

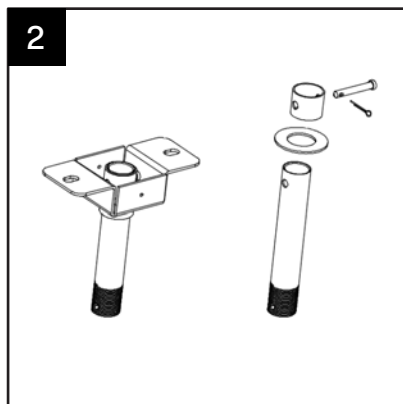


REPLACE DOWNROD (OPTIONAL)

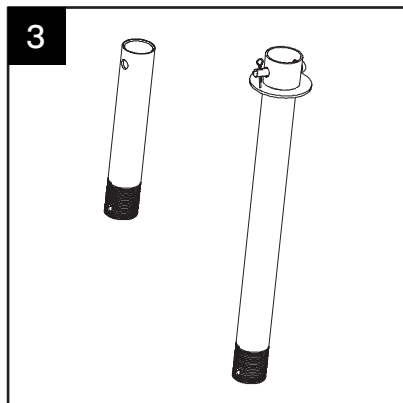
1. Unscrew the downrod cover, remove the pins and detach the fan from the downrod. Now remove the mounting bracket cover.



2. Next, detach the mounting bracket from the ceiling and remove the downrod. Remove the pins, rubber washer and downrod sleeve.



3. Replace downrod with the required size and re-assemble from step 5 on page 9



CARE & MAINTENANCE

At least twice each year, tighten all screws on the fan. Clean the motor housing with only a soft brush or lint-free cloth to avoid scratching the finish. Clean the blades with a lint-free cloth.

Important: Unplug the fan from outlet before you begin any maintenance tasks. Do not use water or a damp cloth to clean the ceiling fan.

WARRANTY

Under the Australian Consumer Law (ACL) or NZ Consumer Guarantees Act (CGA), you are entitled to a 12 month replacement or refund for product failure and compensation for any other reasonably foreseeable loss or damage.

Tradeware offers a 3 Year Warranty. The additional warranties, terms and conditions are outlined on the website www.dynabreeze.com.au under the Support tab.

Under Support, you can also register your product upon purchase and enjoy the peace of mind of knowing your product is registered should anything happen.

If the unit fails to operate efficiently, is broken or other problems arise, unplug and do not operate. Ask for advice by calling Tradeware.

To claim, the fan should be returned to the place of purchase or via the website within the warranty period.

Such claims must include:

- Details of the alleged defect or fault
- Evidence of the claim
- Proof of purchase documentation which clearly shows the date and place of purchase.

Please visit www.dynabreeze.com.au for more details



Tradeware

Tradeware

46 Birralelee Road, Regency Park
South Australia 5010
info@tradeware.com.au
AU: 1300 658 494 | NZ: 0800 689 960
www.tradeware.com.au

Due to continual product development, please note the information and content provided may not be final and may be subject to changes.

